



**Innovating  
for Sustainability**





## About *TrinityRail*®

**Rail is a Sustainable Way to  
Move Freight**

**Striving to be More Sustainable**

**Innovating for Sustainability**



## Agenda





**10,000**  **Employees** | **700+**  **Customers**

**6** 

Maintenance

**3** 

Manufacturing

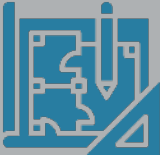
**4** 

Corporate Offices

**141K**  

Railcars owned  
and managed



**270** 

Different  
railcar designs

Our railcars  
ship

**900**  
different  
commodities



Energy



Refined Products  
& Chemicals



Agriculture



Consumer Products



Construction



## Integrity

We do the right thing.



## Diversity, equity, and inclusion

We pursue diverse talent and perspectives.



## Commitment

We do what we say we will do.



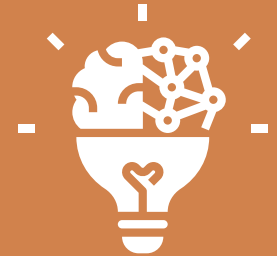
## Excellence

We passionately do our best.



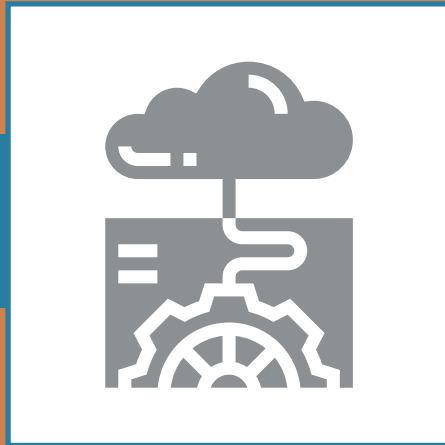
## Innovation

We boldly seek to improve.



# Core Values

**Innovative  
Solutions**



**Supply Chain  
Optimization**



**Trusted  
Expertise**



**Key Differentiators**



# Rail is a Sustainable Way to Move Freight



**TRINITYRAIL**

BUILT TO DELIVER®

# Rail is **safe**, **efficient** and **sustainable**

## Safety



**Fewer  
injuries  
and fatalities**

**Safer movement  
of hazmat  
materials**



## Efficiency



**480 miles** one  
ton of freight  
one gallon of fuel

**\$740B private  
investment  
in infrastructure**



## Sustainability

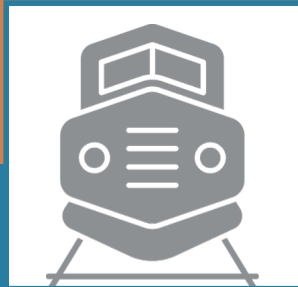


**Only 0.5%**  
of greenhouse  
gas emissions

Truck to rail  
conversion **aids  
emission reduction**



New, more  
**efficient  
locomotives**



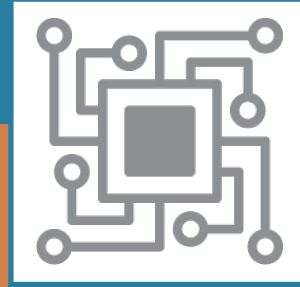
**Enhanced  
operating  
practices**  
and rail car  
components



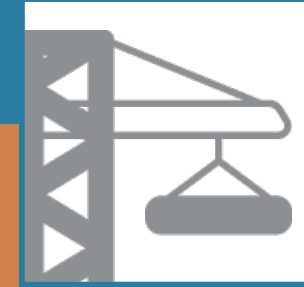
**Improved**  
railcar design



Highly  
**advanced  
computer  
software  
systems**



**Anti-idling**  
technologies



**Zero-emission**  
cranes





**Striving to be  
More Sustainable**



**TRINITYRAIL**

BUILT TO DELIVER®

## ***TrinityRail*** **Standards & Processes**



Responsible Care® Partner



ISO Certification



Regular audits



Tracking of environmental  
and safety metrics

## **Results**

GHG emissions reductions

Improved energy consumption

Reduced water use

Waste to landfill reduction





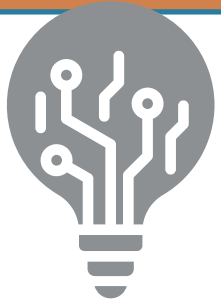


# Innovating for Sustainability





**Ideation**



**Discovery**



**STAGE 1**

**Scoping**



**STAGE 2**

**Business Case**



**STAGE 3**

**Development and Testing**



**STAGE 4**

**Launch**



**STAGE 5**

**How does this product support sustainability?**



# Sustainable Conversions



ACC's Responsible Care® Award  
Program for Waste Minimization,  
Reuse and Recycle



Leveraging existing assets,  
25,000 pounds of components  
per railcar reused



Repurposed and reused 54+  
million pounds of material  
since 2022

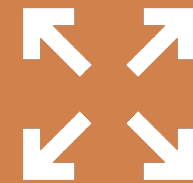






**5649 5459**  
**5239 4359**

### Side-Seam Covered Hopper Family



Optimized side and  
roof design for  
increased capacity



Shorter length than  
standard allows more  
cars per unit train



Corrugated sides for  
strength and efficiency





# TRINCOOL™



Enhanced composite usage reduces material and weight for increased capacity and efficiency



Improved fuel performance



Offers a variety of features to maximize thermal effectiveness and composite usage allows for efficient change between cooled and frozen states







# HiTop<sup>TM</sup>



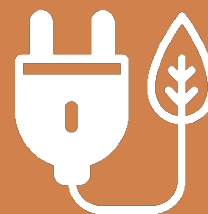
Multiple autorack configurations tailored to move finished vehicles from highway to rail

---



New design with increased height to transport cargo and transit vans

---



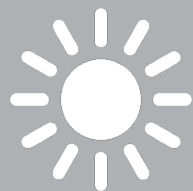
Includes ability to move electric vehicles



Provides visibility to  
increase the efficiency of  
rail equipment



Next-generation  
technology unlocks the  
environmental benefits  
of rail shipping



Solar powered options





